

**PRELIMINARY DRAWING
NOT FOR CONSTRUCTION**

REVISION SCHEDULE

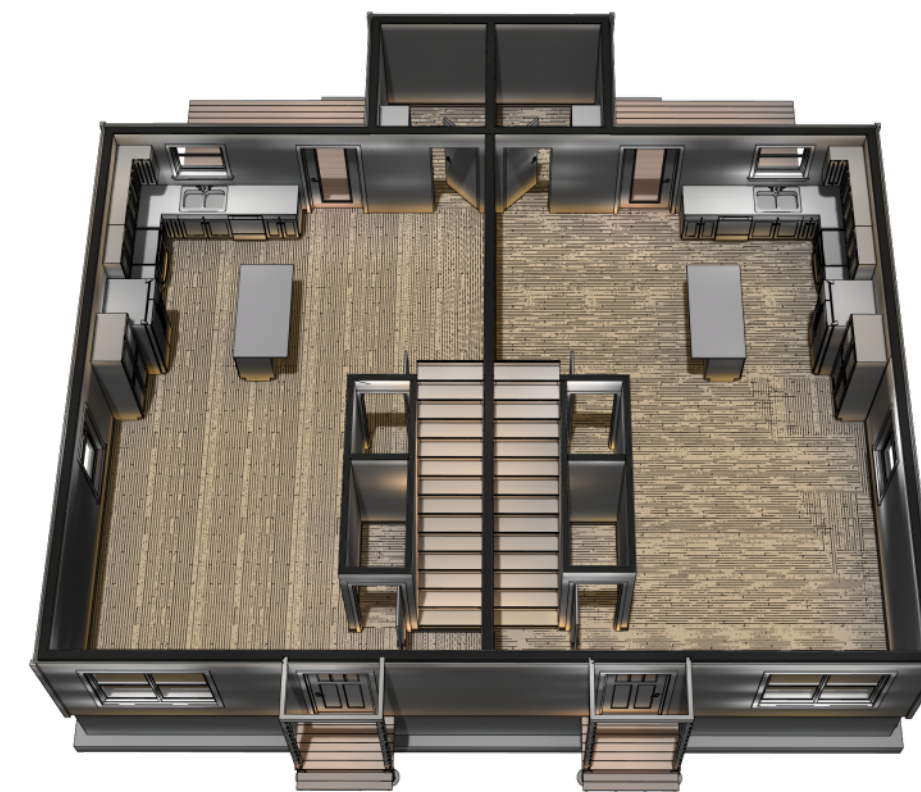
NUMBER	DATE	REVISION NOTE

AREA SCHEDULE

NAME	AREA
FOOTPRINT	1555.2 sq ft.
UNIT 1	1533.3 sq ft.
UNIT 2	1534.1 sq ft.

DRAWING SCHEDULE

TITLE PAGE	1
EXTERIOR ELEVATIONS	2
FIRST & SECOND FLOOR PLANS	3
FROST WALLS & ROOF PLAN	4



“ATTENTION HOMEOWNERS, BUILDERS, DESIGNERS & ARCHITECTS”

ALL WORK SHALL CONFORM TO STATE AND LOCAL BUILDING CODES

THE BUILDING CODE IS THE MINIMUM REQUIREMENT, ALWAYS CONSULT WITH THE LOCAL AUTHORITIES FOR AMENDMENTS OR IMPROVEMENTS TO THE CODE

ALL DIMENSIONS ARE TO BE VERIFIED IN THE FIELD

ALL FOOTINGS ARE TO REST ON UNDISTURBED SOIL AND EXTEND BELOW THE FROST LINE

ALL LUMBER EXPOSED TO THE WEATHER OR IN DIRECT CONTACT WITH CONCRETE MUST BE PRESSURE TREATED

SMOKE ALARMS ARE TO BE HARDWIRED, INTERCONNECTED AND INSTALLED IN THE FOLLOWING LOCATIONS:

- EACH SLEEPING AREA
- OUTSIDE EACH SEPERATE SLEEPING AREA IN THE VICINITY OF THE BEDROOMS
- ON EACH ADDITIONAL STORY INCLUDING BASEMENT AND HABITABLE ATTICS
- NOT LESS THAN 3' HORIZONTALLY FROM A BATHROOM DOOR CONTAINING A SHOWER OR A BATHTUB

A GARAGE CEILING WITH HABITABLE SPACE ABOVE MUST BE PROTECTED WITH 5/8" TYPE X GYPSUM

COMMON WALL BETWEEN HOUSE AND GARAGE MUST HAVE NO LESS THAN 1/2" GYPSUM ON THE GARAGE SIDE

OPENINGS BETWEEN THE RESIDENCE AND GARAGE SHALL BE PROTECTED WITH A 20 MIN. FIRE RATE DOOR EQUIPPED WITH A SELF-CLOSING DEVICE.

GARAGE SLAB MUST BE AN APPROVED NON-COMBUSTIBLE MATERIAL AND BE SLOPED TO FACILITATE THE MOVEMENT OF LIQUIDS TO A FLOOR DRAIN OR THE MAIN VEHICLE ENTRY DOOR

MAX SILL HEIGHT FOR EGRESS WINDOWS IS 44"

FOR EGRESS, TEMPERED GLASS, SASH LIMITER OR WOOD (WINDOW OPENING CONTROL DEVICE) PLEASE REFER TO 2015 IRC

REFER TO IRC TABLE R602.3(1) FOR FASTENING SCHEDULE

REFER TO IRC R602.1(2) FOR INTERIOR GIRDER SPANS

OPENING SCHEDULE

LIBRARY NAME	PRODUCT CODE	COUNT	EGRESS
SP\DOORS\EXTERIOR\ENTRY	3068 L	1	Yes
SP\DOORS\EXTERIOR\ENTRY	3068 R	1	Yes
SP\DOORS\EXTERIOR\HINGED\GLASS	3068 L	1	Yes
SP\DOORS\EXTERIOR\HINGED\GLASS	3068 R	1	Yes
SP\DOORS\INTERIOR\HINGED	2868 L	1	No
SP\DOORS\INTERIOR\HINGED	2868 R	1	No
SP\DOORS\INTERIOR\HINGED	2468 L	3	No
SP\DOORS\INTERIOR\HINGED	2468 R	3	No
SP\WINDOWS\MWD\556 SERIES	MIDH 3030	2	No
SP\WINDOWS\MWD\556 SERIES	MIDH 3030-2	6	Yes
SP\WINDOWS\MWD\556 SERIES	MIDH 3030	6	Yes
SP\DOORS\INTERIOR\HINGED	2668 L	6	No
SP\DOORS\INTERIOR\HINGED	2668 R	6	No
SP\DOORS\INTERIOR\SLIDER	6068 S	2	No



FRONT VIEW



RIGHT VIEW



REAR VIEW



LEFT VIEW

22 LOCATIONS ACROSS MAINE & NEW HAMPSHIRE
 AUBURN · BANGOR · BAR HARBOR · BELFAST · BELGRADE
 BLUE HILL · BOOTHBAY HARBOR · BRUNSWICK · BUCKSPORT
 CALAIS · CAMDEN · CHERRYFIELD · DANBURSCOTTA · ELLSWORTH
 FAIRFIELD · FARMINGTON · GREENVILLE · MACHIAS · PORTLAND
 ROCHESTER (NH) · ROCKLAND · SKOWHEGAN

**Hammond
Lumber Company**

WWW.HAMMONDLUMBER.COM
 DRAWINGS ARE PROVIDED BY HAMMOND LUMBER COMPANY AS A SERVICE TO ITS CUSTOMERS AND ARE INTENDED FOR INFORMATIONAL AND ILLUSTRATIVE PURPOSES ONLY. THE INFORMATION PRESENTED IN THESE DRAWINGS WAS NOT PREPARED OR REVIEWED BY A REGISTERED ARCHITECT OR ENGINEER. HAMMOND LUMBER COMPANY DOES NOT WARRANT THE ACCURACY OF THE INFORMATION PRESENTED IN THESE DRAWINGS. THE CUSTOMER AGREES TO PROCEED WITH THESE DRAWINGS AT HIS/HER OWN RISK AND HAMMOND LUMBER COMPANY DISCLAIMS ANY RESPONSIBILITY IF THEY ARE SO USED.

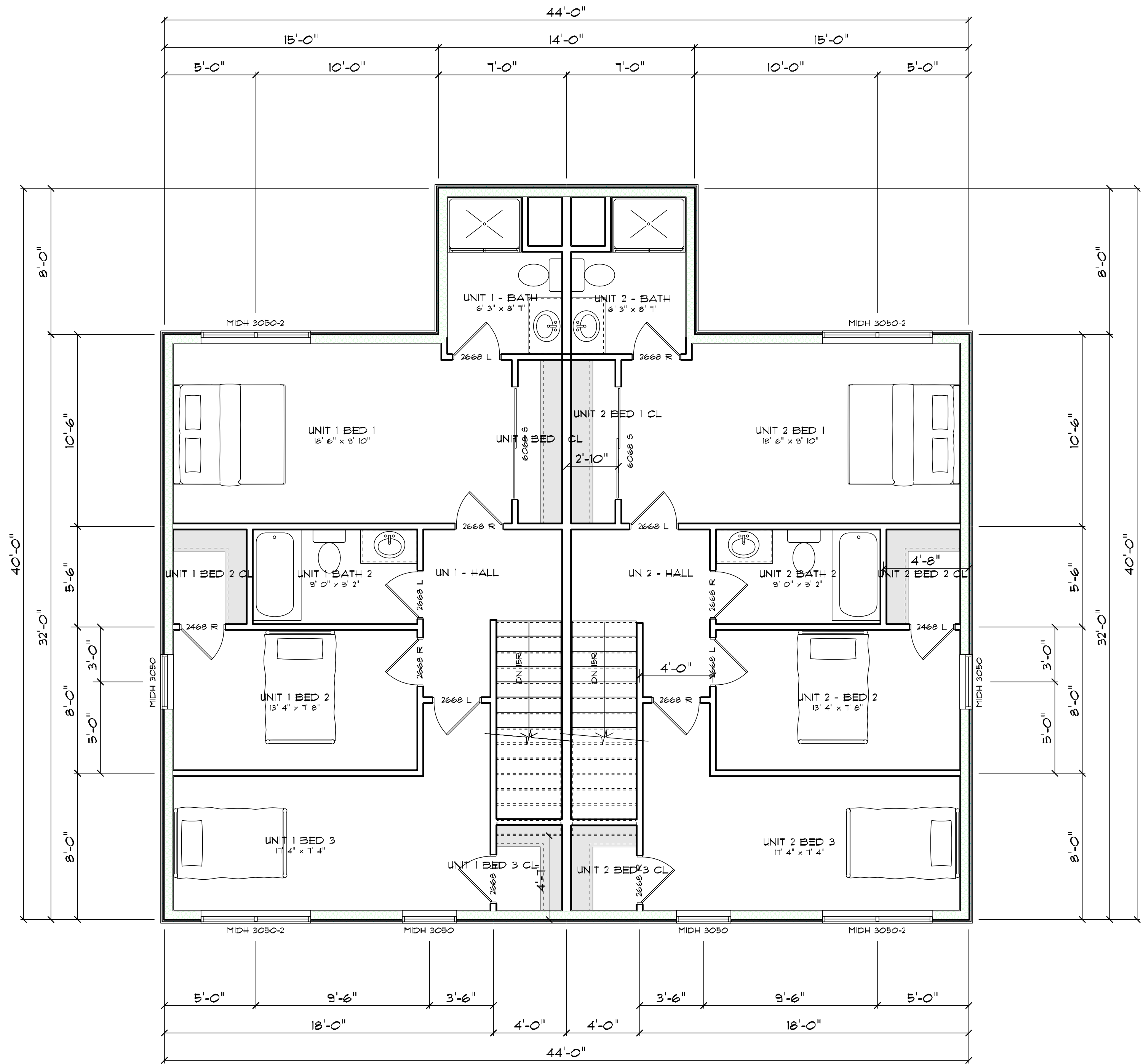
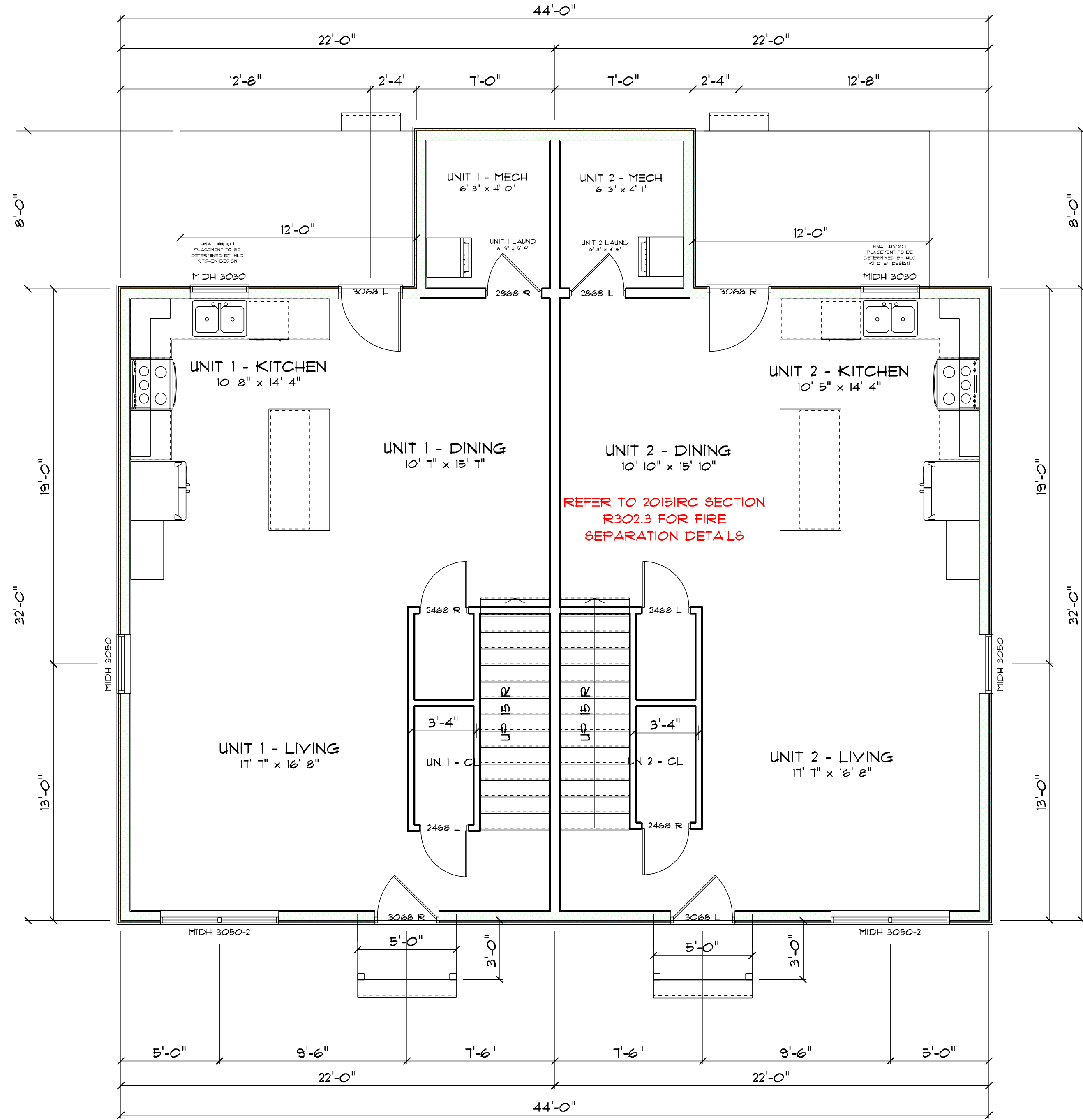
TEAM PROPERTIES

DUPLEX	DUPLEX	BANGOR
SUN	NBD	BGR
4/11/22	Friday, May 26, 2023	
SCALE = AS NOTED		

**HOME
PLANNING CENTER**
 A Division of Hammond Lumber Company

D1220620
 1 OF 4

**PRELIMINARY DRAWING
NOT FOR CONSTRUCTION**



22 LOCATIONS ACROSS MAINE & NEW HAMPSHIRE
 AUBURN · BANGOR · BAR HARBOR · BELFAST · BELGRADE
 BLUE HILL · BOOTHBAY HARBOR · BRUNSWICK · BUCKSPORT
 CALAIS · CAMDEN · CHERRYFIELD · DANBURSCOTTA · ELLSWORTH
 FAIRFIELD · FARMINGTON · GREENVILLE · MACHIAS · PORTLAND
 ROCHESTER (NH) · ROCKLAND · SKOWHEGAN
WWW.HAMMONDLUMBER.COM

**Hammond
Lumber Company**

DRAWINGS ARE PROVIDED BY HAMMOND LUMBER COMPANY AS A SERVICE TO ITS CUSTOMERS AND ARE INTENDED FOR INFORMATIONAL AND ILLUSTRATIVE PURPOSES ONLY. THE INFORMATION PRESENTED IN THESE DRAWINGS WAS NOT PREPARED OR REVIEWED BY A REGISTERED ARCHITECT OR ENGINEER. HAMMOND LUMBER COMPANY DOES NOT WARRANT THE ACCURACY OF THE INFORMATION PRESENTED IN THESE DRAWINGS. THE CUSTOMER AGREES TO PROCEED WITH THE SERVICES PROVIDED BY HAMMOND LUMBER COMPANY WITHOUT ANY LIABILITY FOR CONSTRUCTION AND HAMMOND LUMBER COMPANY DISCLAIMS ANY RESPONSIBILITY IF THEY ARE SO USED.

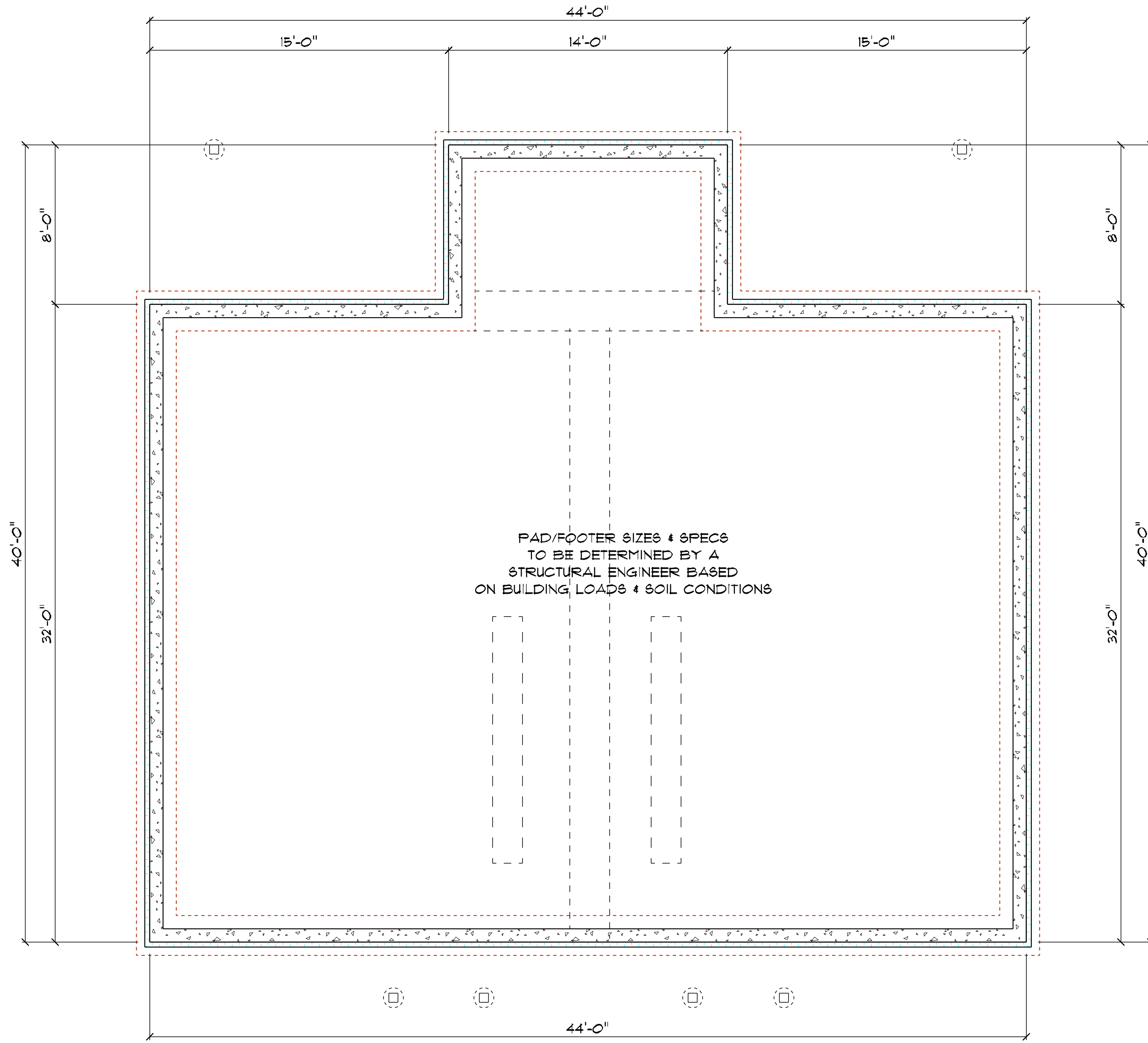
TEAM PROPERTIES

DUPLEX	SUN	NBD	BGR	4/11/22
DUPLEX	Rtdg, 10/26, 2023			
BANGOR	SCALE = AS NOTED			

**HOME
PLANNING CENTER**
A Division of Hammond Lumber Company

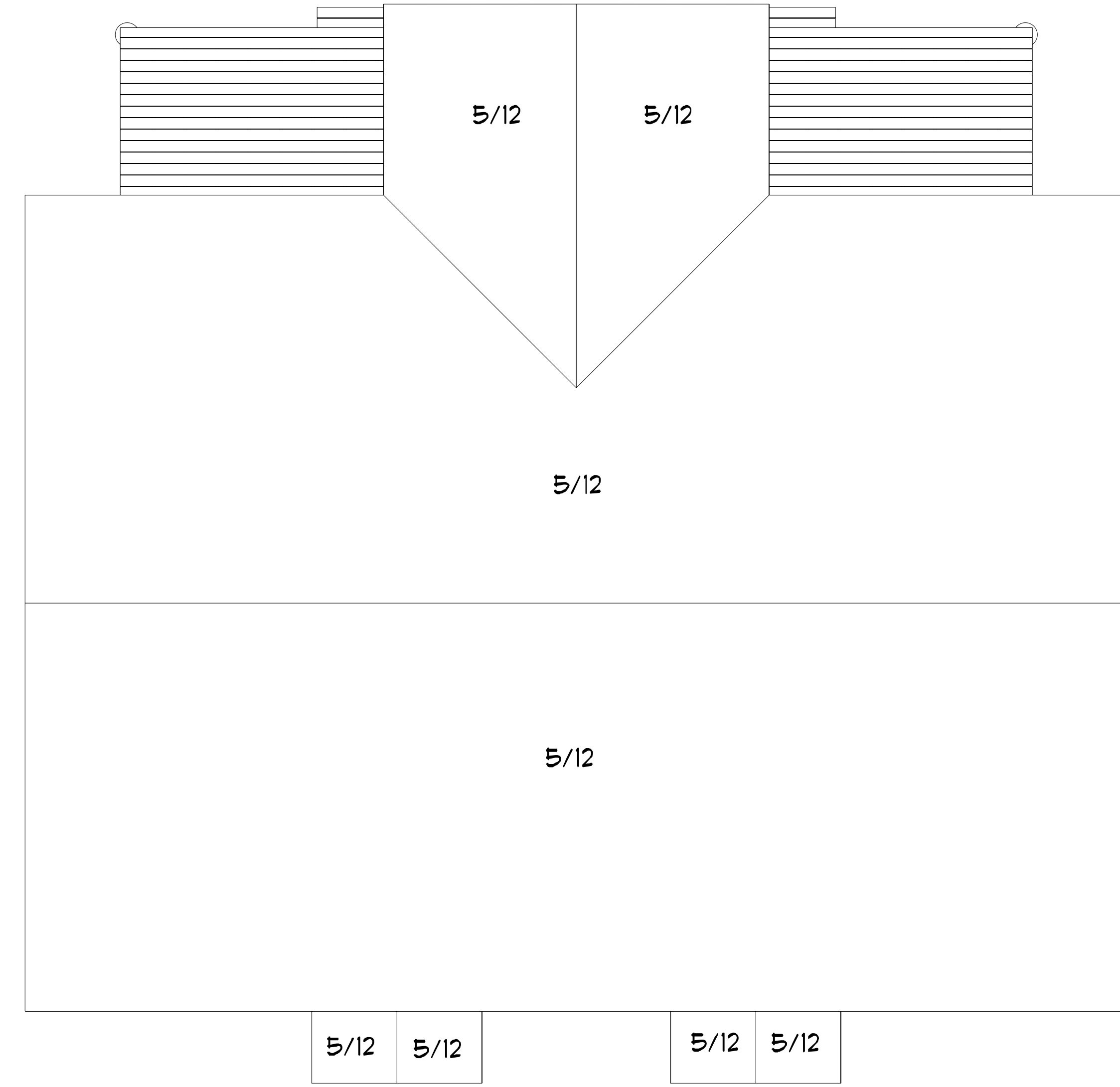
D1220620
3 OF 4

**PRELIMINARY DRAWING
NOT FOR CONSTRUCTION**



FROST WALLS
SCALE: 1/4" = 1'-0"

PAD/FOOTER SIZES & SPECS
TO BE DETERMINED BY A
STRUCTURAL ENGINEER BASED
ON BUILDING LOADS & SOIL CONDITIONS



ROOF PLAN
SCALE: 1/4" = 1'-0"



TEAM PROPERTIES

DUPLEX	SUN	NBD	BGR	4/11/22
DUPLEX				
BANGOR				

DUPLEX
4 OF 4



22 LOCATIONS ACROSS MAINE & NEW HAMPSHIRE
AUBURN · BANGOR · BAR HARBOR · BELFAST · BELGRADE
BLUE HILL · BOOTHBY HARBOR · BRUNSWICK · BUCKSPORT
CALAIS · CAMDEN · CHERRYFIELD · DANBURSCOTTA · ELLSWORTH
FAIRFIELD · FARMINGTON · GREENVILLE · MACHIAS · PORTLAND
ROCHESTER (NH) · ROCKLAND · SKOWHEGAN
WWW.HAMMONDLUMBER.COM

DRAWINGS ARE PROVIDED BY HAMMOND LUMBER COMPANY AS A SERVICE TO ITS CUSTOMERS AND ARE INTENDED FOR INFORMATIONAL AND ILLUSTRATIVE PURPOSES ONLY. THE INFORMATION PRESENTED IN THESE DRAWINGS WAS NOT PREPARED OR REVIEWED BY A REGISTERED ARCHITECT OR ENGINEER. HAMMOND LUMBER COMPANY DOES NOT WARRANT THE ACCURACY OF THE INFORMATION OR THE FITNESS OF THE INFORMATION FOR ANY PARTICULAR PURPOSE. THE CUSTOMER AGREES TO PROCEED WITH THE DRAWINGS AT HIS/HER OWN RISK AND HAMMOND LUMBER COMPANY DISCLAIMS ANY RESPONSIBILITY IF THEY ARE SO USED.